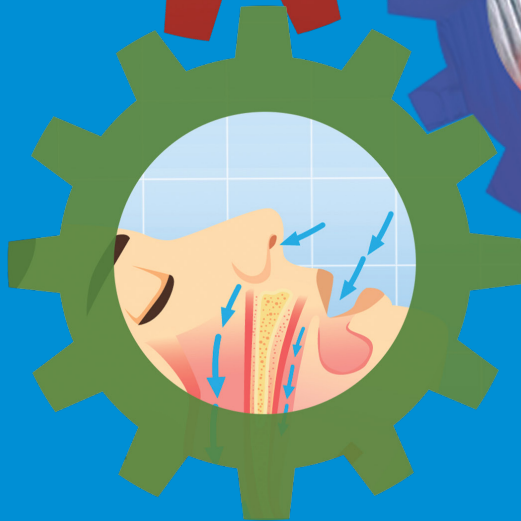
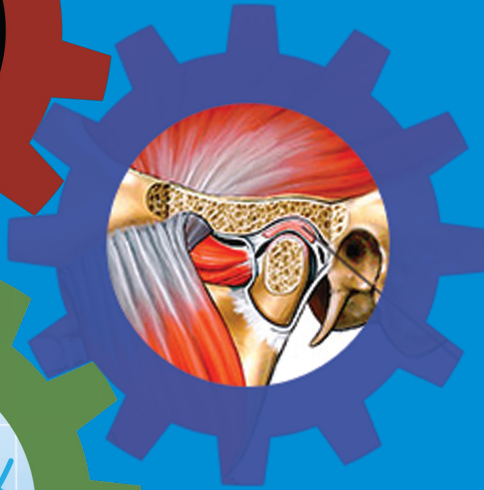
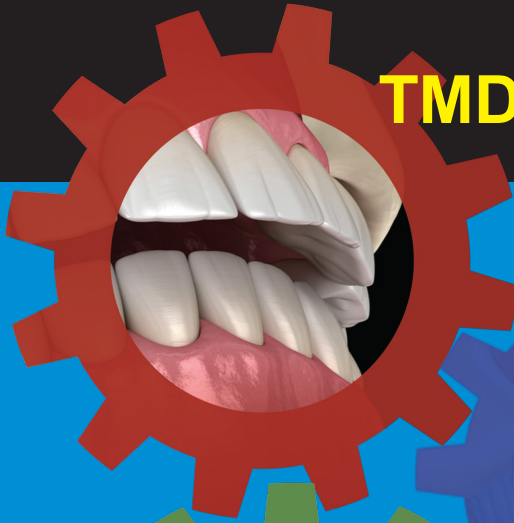


THE COMORBID CONDITIONS of TMD, OSA, and CLASS II OCCLUSION



AUGUST 21-22, 2020

- Learn the relationship between facial growth, airway, & TM joint pathology
- Understand craniofacial growth dynamics
- Avoid misdiagnosis and improve patient treatment response & satisfaction
- Learn fast ceph tracing & diagnostic techniques
- Create long-term, balanced muscle function & occlusal stability

Your paid tuition also includes:

- JKL Software's easy-to-use **Cephworx** cephalometric tracing & analysis software
- Membership in the **Central Indiana Study Club**, a section of the International Association for Orthodontics, offering excellent opportunities including:
 - Networking & Mentoring
 - IAO CE credits
 - Nationally recognized speakers



Mark Your Calendar!

Only \$1200 for 2 days of intense learning!
August 21-22, 2020 • Pendleton, Indiana

ONLY A FEW SPOTS REMAIN!
CALL TODAY TO REGISTER (765) 778-3032



Presented by IAO Diplomate & Master Senior Instructor
Dr. Kenneth Lau, DDS, MICCMO, FAACP, IBO

JOIN US FOR A 2 DAY, HANDS-ON LEARNING EXPERIENCE!